



# Savanna High School

## PRINCIPAL

Mike Pooley

## ASSISTANT PRINCIPALS

Israel Rubio - 9th A-F & 12th Grade

Erika Yi - 9th G-N & 11th Grade

Ryan Kile - 9th O-Z & 10th Grade

## COUNSELORS

Brittany Bouska - Lead & Programs Counselor

Brenda Preciado - C/O 2027

Martha Mata - C/O 2026

Rosie Cardoza - C/O 2028

Veronica Alvarez - C/O 2025

## SCHOOL

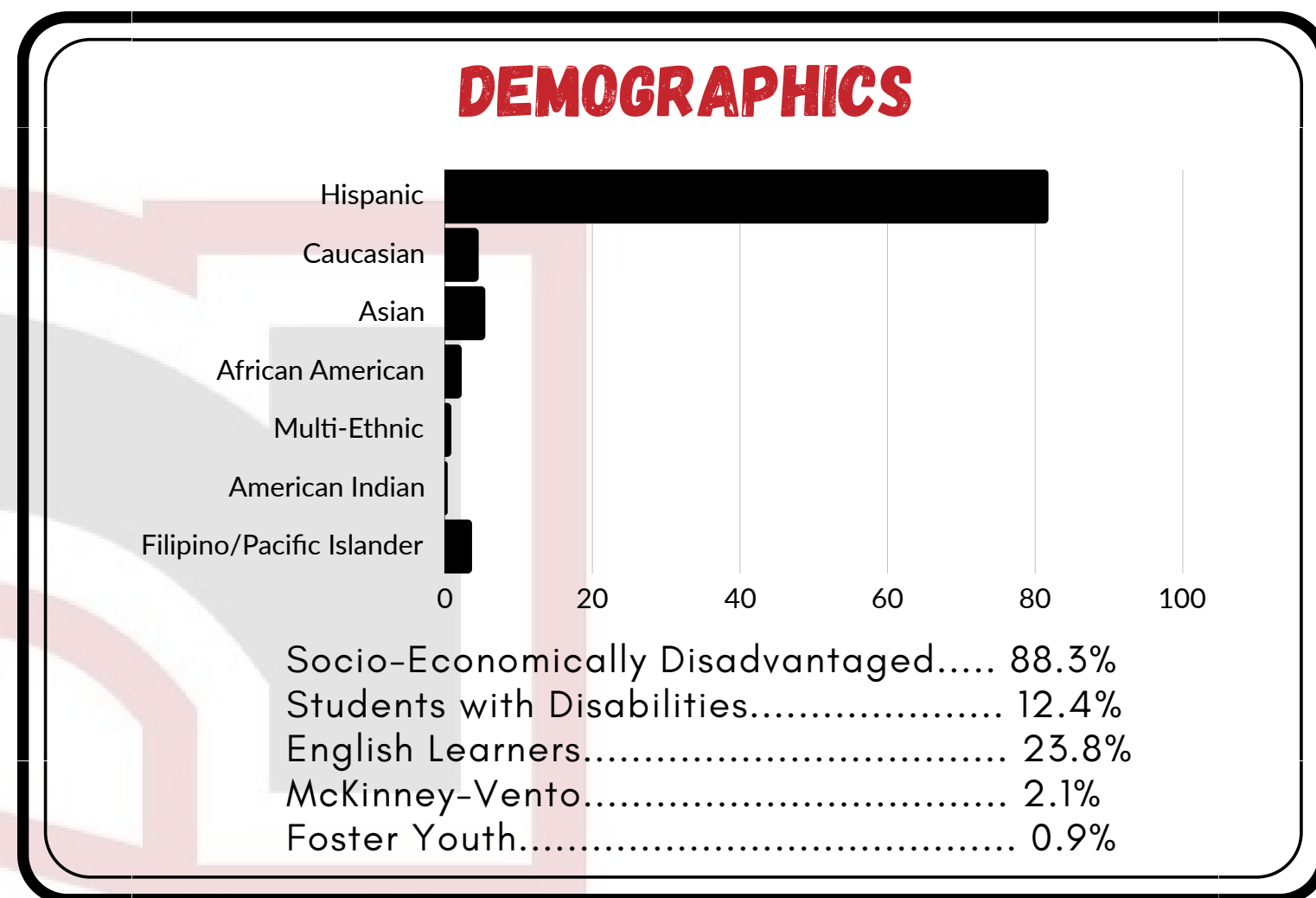
Savanna High School receives supplemental funding from Title I and Local Control Funding Formula (LCFF) Concentration. Since 80% of our student population is low income by the federal definition, Title I funding is used to provide academic support for low performing students, additional teachers and paraprofessionals that focus on mathematics and English language arts support, and supplemental instructional material to make content and instruction accessible. LCFF funds provide additional support to meet the goals outlined in the Local Control and Accountability Plan (LCAP), particularly focusing on English Learners, low-income students, and foster youth.

## COMMUNITY

Savanna High School was established in 1961 and is one of eight comprehensive high schools in the Anaheim Union High School District. Savanna High School is located in Anaheim, California and serves West Anaheim, parts of Buena Park, and some unincorporated areas of Orange County.

## RECOGNITION

- 2017: California Democracy School
- 2016: California Positive Behavioral Intervention & Supports Gold Recognition
- 2020: Civic Learning Award of Excellence  
Golden Bell for Dual Immersion
- 2015: Gold Ribbon School
- 2013: P21 Exemplar School



## PROGRAMS & RECOGNITIONS OFFERED

- **Upward Bound, CSUF**  
Approx. 20 students
- **Educational Talent Search, CSUF**  
Approx. 100 students
- **Early Academic Outreach Program, UCI**  
Approx. 70 students
- **Spanish Dual Immersion, Global Language & Leadership Academy**  
Approx. 73 students
- **Medical Academy**  
Approx. 220 students
- **AVID**  
Approx. 170 students
- **Puente\***  
Approx. 117 students

### CLASS OF 2024

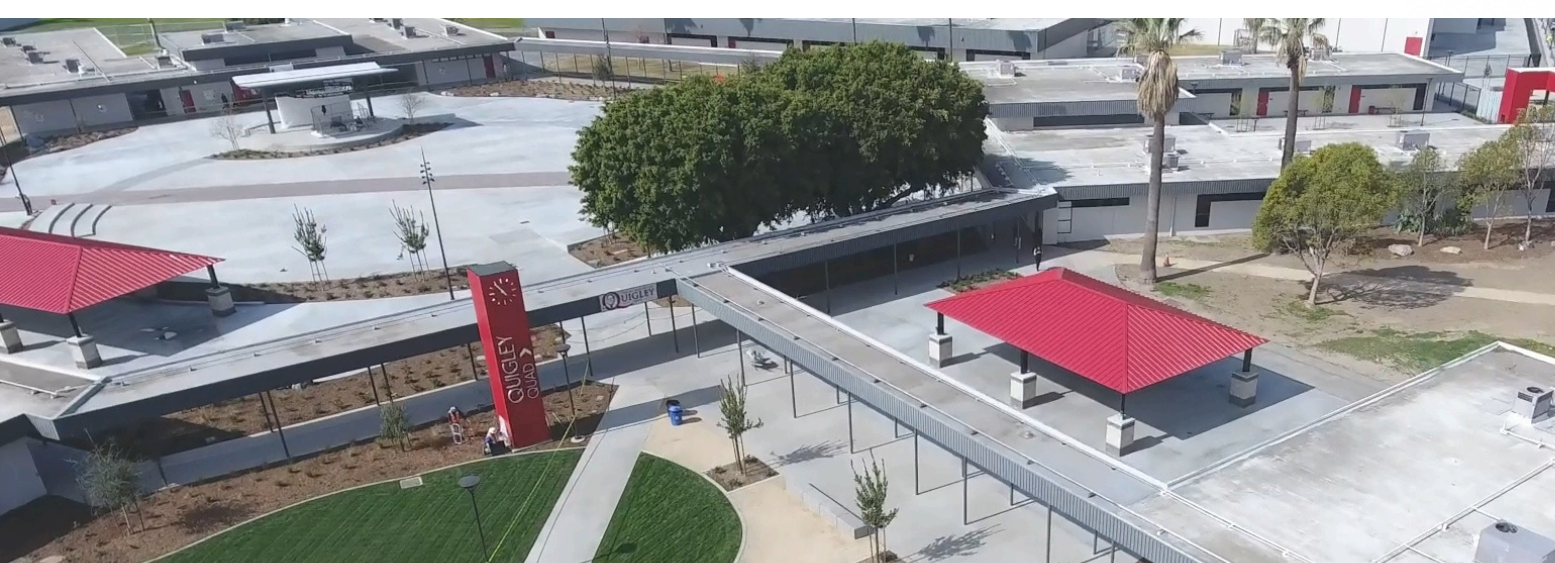
- **Academic Honors** - 81 recipients
- **Career Distinction** - 157 recipients
- **Dual Enrollment** - 39 recipients
- **Golden State Seal** - 73 recipients
- **Seal of Bi-literacy** - 82 recipients
- **Seal of Tri-literacy** - 4 recipients
- **VAPA Distinction** - 29 recipients

\*The PUENTE Project is a UC sponsored national award-winning program that has helped tens of thousands of educationally disadvantaged students enroll in four-year colleges and universities, earn degrees, and return to the community as leaders and mentors to future generations.

## POSTSECONDARY CHOICES

In the class of 2024, 44% of seniors completed the necessary courses for UC/CSU admissions. Savanna Rebels have various choices for postsecondary options. Below are some of those options and the number of students selection that option.

POSTSECONDARY OPTION	# OF STUDENTS
4 Year University	94
Community College/ Trade School	240
Military	17
Other	49



Established 1961



# Savanna High School

## GRADUATION REQUIREMENTS

Savanna High School requires 220 completed credits for a high school diploma

SUBJECT AREA	YEARS NEEDED	TOTAL CREDITS
English	4	40
Mathematics	3	30
Physical Education	2	20
Science	2	20
Social Science	3	30
Fine Art or Foreign Language	1	10
Career Education	1	10
Health	.5	5
Electives	5.5	55

## HONORS COURSES AVAILABLE

English 1	English 2	English 3 Patient Care
Living Earth	Chemistry of the Earth Systems	Physics of the Universe
Math 1-2	Math 2-3	Pre-Calculus
Spanish 4	Economics	US History Public Health
GLLA World History	English 4 Medical	Stats with Data

## AP CLASSES & PASS RATES

<b>2D Art &amp; Design</b>	100%	<b>Biology</b>	4%
<b>Calculus AB</b>	0%	<b>Calculus BC</b>	100%
<b>Chemistry</b>	0%	<b>English Composition</b>	19%
<b>English Literature</b>	33%	<b>European History</b>	35%
<b>Psychology</b>	50%	<b>Physics</b>	10%
<b>Spanish Literature</b>	88%	<b>Spanish Language</b>	100%
<b>U.S. History</b>	57%	<b>American Government &amp; Politics</b>	41%

At Savanna High School we have no limit to the number of honors/AP courses a student can take. However, there may be schedule conflicts due to the limited number of honors/AP Courses offered here. In addition, some courses have grade level restrictions.

## TRANSCRIPT COURSE LEVEL DESIGNATION / GRADING

LETTER GRADE	INTERPRETATION	REGULAR POINT VALUE	WEIGHTED POINT VALUE
A	Superior	4.00	5.00
B	Above Average	3.00	4.00
C	Average	2.00	3.00
D	Below Average	1.00	1.00
F	Failing	0.00	0.00
P	Pass	0.00	0.00
NC	No Credit	0.00	0.00

Total 9-12	Grades earned in all courses taken from 9th-12th
Academic 9-12	Grades earned in all courses, except PE/Athletics from 9th-12th
Academic 10-12	Grades earned in all courses, except PE/Athletics from 9th-12th

## EMBEDDED DUAL ENROLLMENT

<b>COUN 140</b>	21
<b>HIS 171</b>	19
<b>ETHS 150</b>	17

Additional Dual Enrollment courses are offered after school. The options change per semester based on Cypress College availability.

## SAT SCORES

YEAR	# OF TEST-TAKERS	ERW- Evidence-Based Reading and Writing	MATH	TOTAL
23-24	25	573	567	1141
YEAR	# OF TEST-TAKERS	ERW- Evidence-Based Reading and Writing	MATH	TOTAL
22-23	44	531	526	1056